

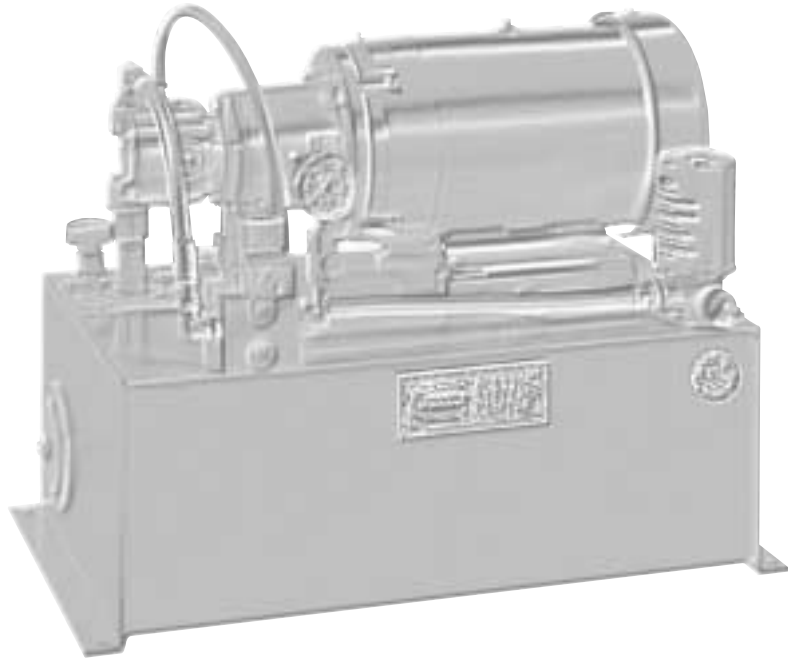
**LOW PROFILE  
POWER UNITS**

10 to 30 Gallon Reservoir Capacity

**POLYPAC<sup>®</sup>  
SYSTEMS  
CENTER**



L  
O  
W  
  
P  
R  
O  
F  
I  
L  
E  
  
P  
O  
W  
E  
R  
  
U  
N  
I  
T  
S





# POLYPAC<sup>®</sup> SYSTEMS CENTER

## LOW PROFILE POWER UNITS

10 to 30 Gallon Reservoir Capacity



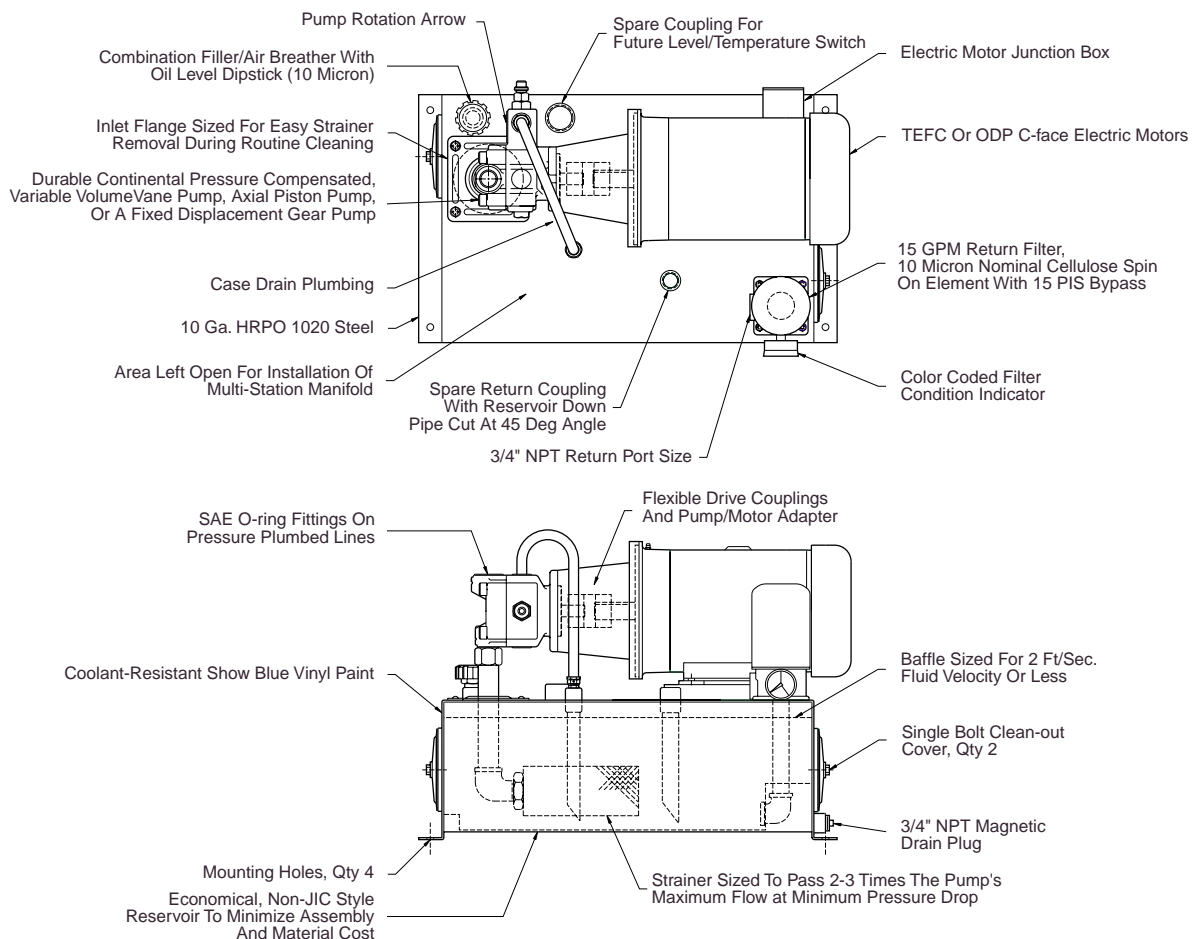
Low Profile Power Units are designed for use in locations where space is at a premium, or where the power of a NFPA/JIC-Style unit is needed in a smaller, less expensive package. They're ideal for industrial applications requiring moderate fluid volume and flow rate.

Typical applications include use with:

- Test Benches
- Machine Tools and Packaging Equipment
- Clamping Equipment
- Drilling Equipment

Low Profile systems are ready to use, with all but the actuators plumbed.

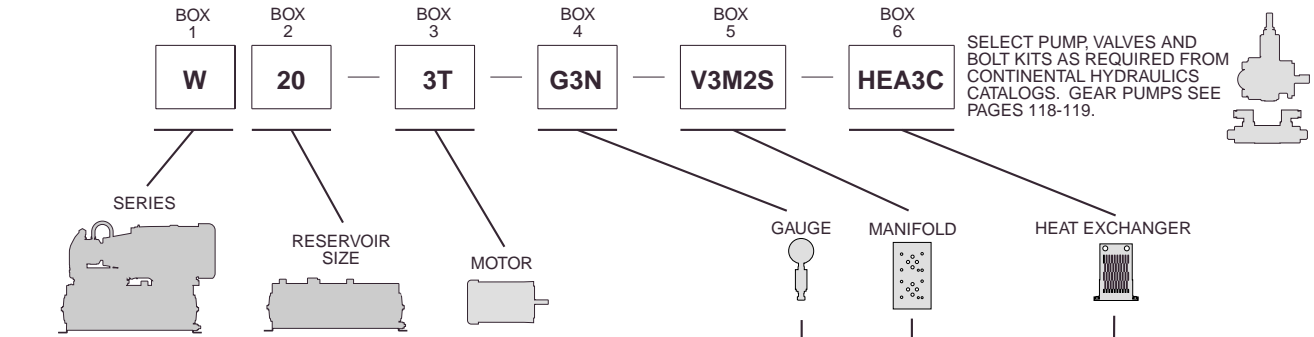
Low Profile Power Units are the perfect choice for demanding industrial applications where heat buildup is unlikely, and compact installation is a must.



# LOW PROFILE POWER UNITS

10 to 30 Gallon Reservoir Capacity

# POLYPAC SYSTEMS CENTER



SELECT PUMP VALVES AND BOLT KITS AS REQUIRED FROM CONTINENTAL HYDRAULICS CATALOGS. GEAR PUMPS SEE PAGES 118-119.



CODE LTR.	POWER UNIT SERIES
W	"W" SERIES HORIZONTAL

CODE LTR.	H.P.	VOLTAGE 1800 RPM	FRAME SIZE
1T	1	208-230/460/60/3	143TC
1S	1	115/208-230/60/1	143TC
1.5T	1-1/2	208-230/460/60/3	145TC
1.5S	1-1/2	115/208-230/60/1	145TC
2T	2	208-230/460/60/3	145TC
2S	2	115/208-230/60/1	145TC
3T	3	208-230/460/60/3	182TC
3S	3	115/208-230/60/1	182TC
5T	5	208-230/460/60/3	184TC
7.5T	7-1/2	208-230/460/60/3	213TC
10T	10	208-230/460/60/3	215TC
15T	15	230/460/60/3	254TC

NOTE: 15T FITS ON W\*30 RESERVOIR ONLY

CODE LTR.	DESCRIPTION
BLANK	NO COOLER OPTION
HEA3C	AIR TO OIL CASE COOLER -12 SAE PORTS 10 PSI BYPASS (VANE PUMP ONLY)

CODE LTR.	DESCRIPTION
BLANK	NO MANIFOLD OPTION
PR	PRESSURE BLOCK WITH BUILT-IN RELIEF -8 SAE "P" & "T" PORTS FEMALE
V3M1S	SINGLE STATION MANIFOLD D03 -8 SAE "A" & "B" PORTS FEMALE
V3M1SR	SINGLE STATION MANIFOLD D03 BUILT-IN RELIEF -8 SAE "A" & "B" PORTS FEMALE
V3M2S	TWO STATION MANIFOLD D03 -8 SAE "A" & "B" PORTS FEMALE
V3M2SR	TWO STATION MANIFOLD D03 BUILT-IN RELIEF -8 SAE "A" & "B" PORTS FEMALE
V3M3S	THREE STATION MANIFOLD D03 -8 SAE "A" & "B" PORTS FEMALE
V3M3SR	THREE STATION MANIFOLD D03 BUILT-IN RELIEF -8 SAE "A" & "B" PORTS FEMALE
V3M4S	FOUR STATION MANIFOLD D03 -8 SAE "A" & "B" PORTS FEMALE
V3M4SR	FOUR STATION MANIFOLD D03 BUILT-IN RELIEF -8 SAE "A" & "B" PORTS FEMALE

CODE LTR.	STANDARD PUMP COMBINATIONS	MAX HORSE POWER
10	G0.6B30 THRU G3.4B21.5	10
	G2.0B31.5 THRU G11.8B27	
	PVR6	
20	G0.6B30 THRU G3.4B21.5	10
	G2.0B31.5 THRU G11.8B27	
	PVR6	
30	G0.6B30 THRU G3.4B21.5	15
	G2.0B31.5 THRU G11.8B27	
	PVR6	

CODE LTR.	DESCRIPTION
BLANK	NO GAUGE OPTIONS
G1	PRESSURE GAUGE 0 - 1000 PSI
G1.5	PRESSURE GAUGE 0 - 1500 PSI
G2	PRESSURE GAUGE 0 - 2000 PSI
G3	PRESSURE GAUGE 0 - 3000 PSI
G5	PRESSURE GAUGE 0 - 5000 PSI
N	NEEDLE VALVE -4 SAE

SELECT VALVES AS REQUIRED FROM APPROPRIATE CONTINENTAL HYDRAULICS CATALOG



**NOTE:**

1. PUMPS AND MOTOR RANGES LISTED FOR EACH RESERVOIR SIZE ARE NORMAL COMBINATIONS. SPECIAL SITUATIONS MAY CALL FOR OTHER COMBINATIONS. PLEASE DISCUSS YOUR APPLICATION WITH YOUR CONTINENTAL HYDRAULICS DISTRIBUTOR OR THE FACTORY.



SELECT GEAR PUMPS AS REQUIRED FROM PAGES 118 AND 119 OF THIS CATALOG. SELECT VANE PUMPS FROM CONTINENTAL HYDRAULICS VANE PUMP CATALOG.

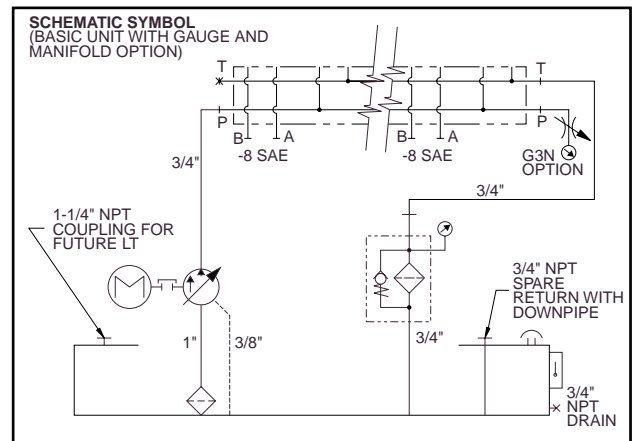
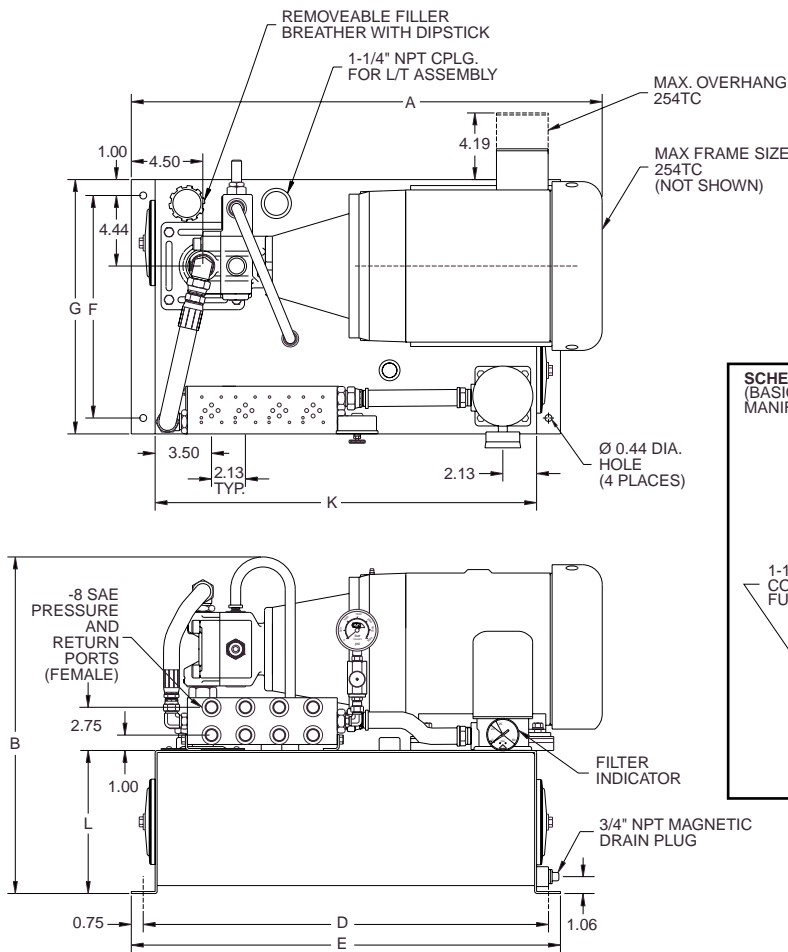
TYPICAL ORDERING CODES	
W20-3T-G3N-V3M2S-HEA3C	(Power Unit)
PVR6-6B20-RF-O-1	(Pump)
VS5M-3A-GB-60L	STATION 1 (Directional Control Valve)
VS5M-1A-GB-60L	STATION 2 (Directional Control Valve)
BD03-100	(Bolt Kit - Quantity 2)
-or-	
WG10-2T-G3N-V3M2SR	(Power Unit)
PFG-2.0B31.5-RF-O-1	(Pump)
VS5M-5L-GB-60L	STATION 1 (Directional Control Valve)
BD03-100	(Bolt Kit - Quantity 1)
VS5M-1A-GB-60L	STATION 2 (Directional Control Valve)
N5S-NDC-G-S	STATION 2 (Flow Control Valve)
BD03-250	(Bolt Kit - Quantity 1)



# POLYPAC<sup>®</sup> SYSTEMS CENTER

## W10-W30 WITH VANE PUMP

Dimensions/Low Profile



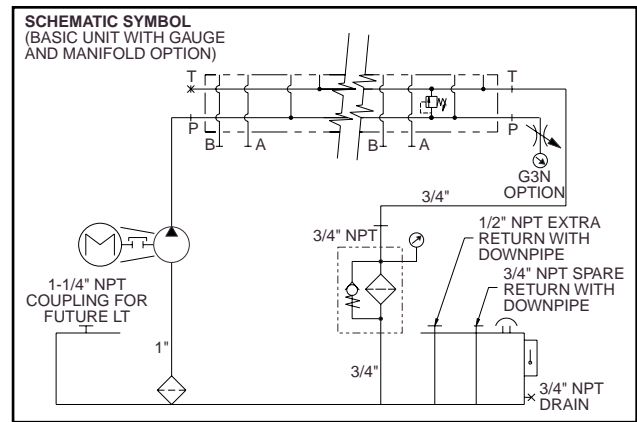
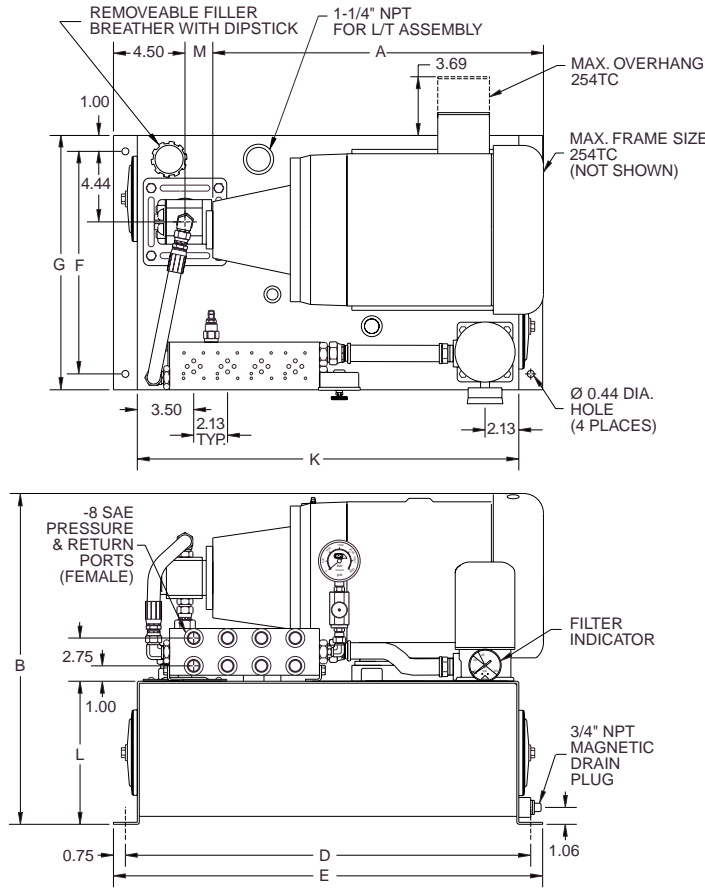
DIMENSIONS																						
MOTOR FRAME	A	B			D			E			F			G			K			L		
		W10	W20	W30	W10	W20	W30	W10	W20	W30	W10	W20	W30	W10	W20	W30	W10	W20	W30	W10	W20	W30
143TC	22.44"	19.55"	21.55"	22.55"	25.50"	29.50"	37.50"	27.00"	31.00"	39.00"	14.00"	16.00"	16.00"	16.00"	18.00"	18.00"	24.00"	28.00"	36.00"	9.00"	11.00"	12.00"
145TC	24.44"	19.55"	21.55"	22.55"	25.50"	29.50"	37.50"	27.00"	31.00"	39.00"	14.00"	16.00"	16.00"	16.00"	18.00"	18.00"	24.00"	28.00"	36.00"	9.00"	11.00"	12.00"
182TC	27.57"	20.55"	22.55"	23.55"	25.50"	29.50"	37.50"	27.00"	31.00"	39.00"	14.00"	16.00"	16.00"	16.00"	18.00"	18.00"	24.00"	28.00"	36.00"	9.00"	11.00"	12.00"
184TC	29.06"	20.55"	22.55"	23.55"	25.50"	29.50"	37.50"	27.00"	31.00"	39.00"	14.00"	16.00"	16.00"	16.00"	18.00"	18.00"	24.00"	28.00"	36.00"	9.00"	11.00"	12.00"
213TC	29.60"	21.30"	22.30"	24.30"	25.50"	29.50"	37.50"	27.00"	31.00"	39.00"	14.00"	16.00"	16.00"	16.00"	18.00"	18.00"	24.00"	28.00"	36.00"	9.00"	11.00"	12.00"
215TC	30.73"	21.30"	22.30"	24.30"	25.50"	29.50"	37.50"	27.00"	31.00"	39.00"	14.00"	16.00"	16.00"	16.00"	18.00"	18.00"	24.00"	28.00"	36.00"	9.00"	11.00"	12.00"
254TC	32.52"			25.63"			37.50"			39.00"			16.00"		18.00"				36.00"			12.00"

GENERAL SPECIFICATIONS	W10	W20	W30
RESERVOIR CAPACITY	10 U.S. GAL. (37.85 L)	20 U.S. GAL. (75.70 L)	30 U.S. GAL. (112.74 L)
SURFACE AREA FOR HEAT TRANSFER	3.35 SQ. FT.	5.13 SQ. FT.	6.76 SQ. FT.
HEAT DISSIPATION AT $\Delta T = 50$ DEG F.	.132 HP	.201 HP	.266 HP
BASIC WEIGHT (LESS OIL, PUMP, AND MOTOR)	84 LBS.	108 LBS	129 LBS
USABLE GALLONS	6 GAL.	12 GAL.	18 GAL.
GALLONS PER INCH RISE	1.57 GAL.	2.07 GAL.	2.67 GAL.
CAPACITY, FULL TO TOP PLATE	12.94 GAL.	21.24 GAL.	30 GAL.
PUMP DATA See Continental Hydraulics VANE PUMP CATALOG for complete codes and specifications.			
FLOW RANGE	UP TO 10 G.P.M.	UP TO 10 G.P.M.	UP TO 10 G.P.M.
PRESSURE RANGE	UP TO 2000-P.S.I.	UP TO 2000-P.S.I.	UP TO 2000-P.S.I.
POWER RANGE	UP TO 10 HP	UP TO 10 HP	UP TO 15 HP

# W10-W30 WITH GEAR PUMP

## Dimensions/Low Profile

# POLYPAC<sup>®</sup> SYSTEMS CENTER



DIMENSIONS		A			B			D			E			F			G			K			L			
MOTOR FRAME		W10	W20	W30	W10	W20	W30	W10	W20	W30	W10	W20	W30	W10	W20	W30	W10	W20	W30	W10	W20	W30	W10	W20	W30	
143TC		15.56"	15.56"	17.13"	19.13"	20.13"	25.50"	29.50"	37.50"	27.00"	31.00"	39.00"	14.00"	16.00"	16.00"	16.00"	18.00"	18.00"	24.00"	28.00"	36.00"	9.00"	11.00"	12.00"		
145TC		15.56"	15.56"	17.13"	19.13"	20.13"	25.50"	29.50"	37.50"	27.00"	31.00"	39.00"	14.00"	16.00"	16.00"	16.00"	18.00"	18.00"	24.00"	28.00"	36.00"	9.00"	11.00"	12.00"		
182TC		18.69"	18.69"	18.94"	20.94"	21.94"	25.50"	29.50"	37.50"	27.00"	31.00"	39.00"	14.00"	16.00"	16.00"	16.00"	18.00"	18.00"	24.00"	28.00"	36.00"	9.00"	11.00"	12.00"		
184TC		20.18"	20.18"	18.94"	20.94"	21.94"	25.50"	29.50"	37.50"	27.00"	31.00"	39.00"	14.00"	16.00"	16.00"	16.00"	18.00"	18.00"	24.00"	28.00"	36.00"	9.00"	11.00"	12.00"		
213TC		20.72"	20.72"	20.50"	22.50"	23.50"	25.50"	29.50"	37.50"	27.00"	31.00"	39.00"	14.00"	16.00"	16.00"	16.00"	18.00"	18.00"	24.00"	28.00"	36.00"	9.00"	11.00"	12.00"		
215TC		21.85"	21.85"	20.50"	22.50"	23.50"	25.50"	29.50"	37.50"	27.00"	31.00"	39.00"	14.00"	16.00"	16.00"	16.00"	18.00"	18.00"	24.00"	28.00"	36.00"	9.00"	11.00"	12.00"		
254TC		NA	23.64"	NA	NA	25.63"	NA	NA	37.50"	NA	NA	39.00"	NA	NA	16.00"	NA	NA	18.00"	NA	NA	36.00"	NA	NA	12.00"		
PUMP CODE		G0.6B30	G0.8B30	G1.1B30	G1.6B30	G2.0B30	G2.3B27	G3.0B26	G3.4B21.5	G2.0B31.5	G2.9B31.5	G3.8B31.5	G5.0B30	G6.8B30	G8.7B30	G10B29	G11.8B27									
M		1.56"	1.60"	1.65"	1.75"	1.81"	1.87"	1.97"	2.09"	1.55"	1.55"	1.55"	1.87"	1.87"	2.11"	2.18"	2.18"									

GENERAL SPECIFICATIONS	W10	W20	W30
RESERVOIR CAPACITY	10 U.S. GAL. (37.85 L)	20 U.S. GAL. (75.70 L)	30 U.S. GAL. (112.74 L)
SURFACE AREA FOR HEAT TRANSFER	3.35 SQ. FT.	5.13 SQ. FT.	6.76 SQ. FT.
HEAT DISSIPATION AT ΔT = 50 DEG F.	.132 HP	.201 HP	.266 HP
BASIC WEIGHT (LESS OIL, PUMP, AND MOTOR)	84 LBS.	108 LBS	129 LBS
USABLE GALLONS	6 GAL.	12 GAL.	18 GAL.
GALLONS PER INCH RISE	1.57 GAL.	2.07 GAL.	2.67 GAL.
CAPACITY, FULL TO TOP PLATE	12.94 GAL.	21.24 GAL.	30 GAL.
PUMP DATA See pages 114 through 115 for complete codes and specifications.			
FLOW RANGE	UP TO 8.9 G.P.M.	UP TO 8.9 G.P.M.	UP TO 8.9 G.P.M.
PRESSURE RANGE	UP TO 3000-P.S.I.	UP TO 3000-P.S.I.	UP TO 3000-P.S.I.
POWER RANGE	UP TO 10 HP	UP TO 10 HP	UP TO 10 HP



®

**POLYPAC<sup>®</sup>  
SYSTEMS  
CENTER**

