
PVR SERIES
VANE PUMPS
CONTROL OPTIONS



Model Shown: PVR15-15B15-RF-0-525B60L

FEATURES

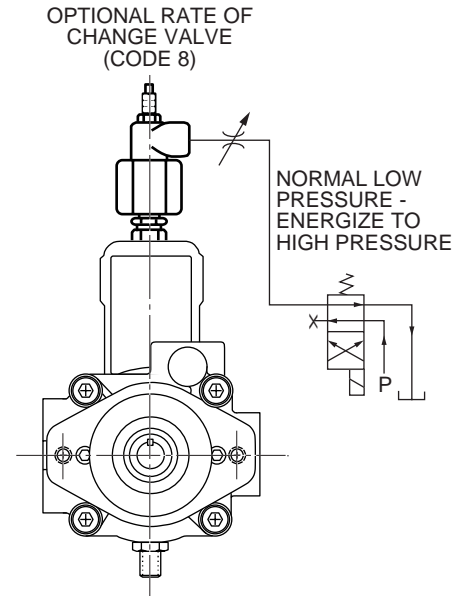
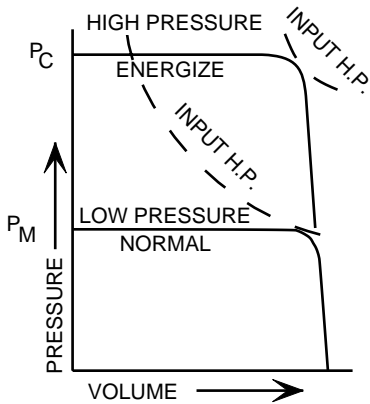
- High and low field-adjustable pressure levels.
- High and low field-adjustable volume levels.
- Field-adjustable pressure rate change between high and low levels.
- Field-adjustable acceleration and deceleration rates between high and low volume levels.
- Pump mounted control valve, or pilot signal from a remote source.
- All combinations of two pressure levels and two volume levels possible.

BENEFITS

- Replace dual flow valve circuits ... reduce overall valve count.
- Replace high-low pressure circuits ... eliminate multiple pumps and pressure intensifiers.
- Reduce system shock by smoothly accelerating and decelerating loads and gradually increasing and decreasing pressures.
- Reduce overall system costs.
- Energy efficient ... use only the power required for the job.
- Available as a field installed option.

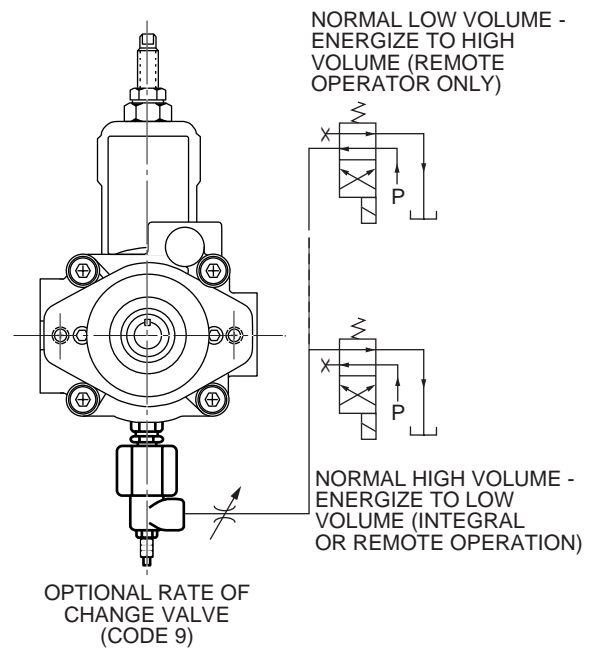
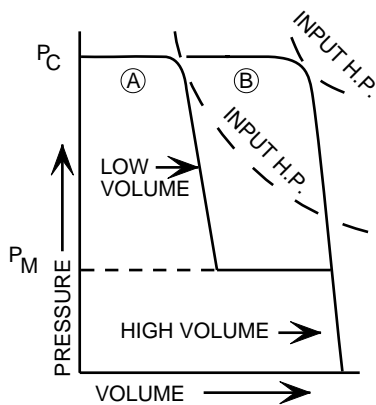
DUAL PRESSURE CONTROL

- Two constant pressure levels; field adjustable to meet system requirements.
- Pressure compensated variable flow; zero to maximum gpm.
- Pump mounted control valve or remote pilot signal.



DUAL VOLUME CONTROL

- Constant pressure; field adjustable to meet system requirements.
- Two field adjustable flow limits;
 - Low limit (A)
 - High limit (B)
- Pump mounted control valve or remote pilot signal.

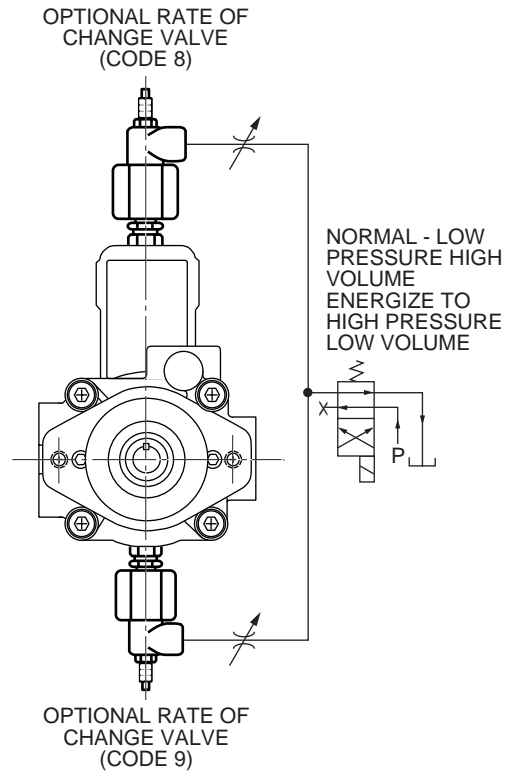
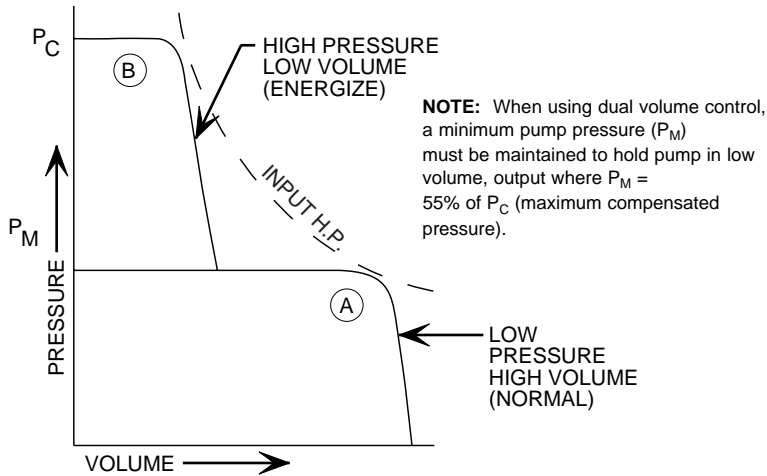


NOTE: When using dual volume control, a minimum pump pressure (P_M) must be maintained to hold pump in low volume, output where $P_M = 55\%$ of P_C (maximum compensated pressure).

DUAL PRESSURE/DUAL VOLUME CONTROL

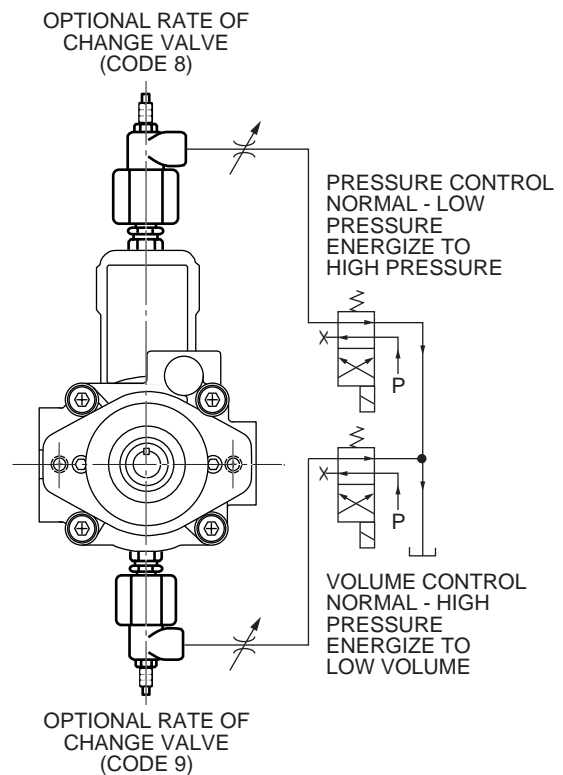
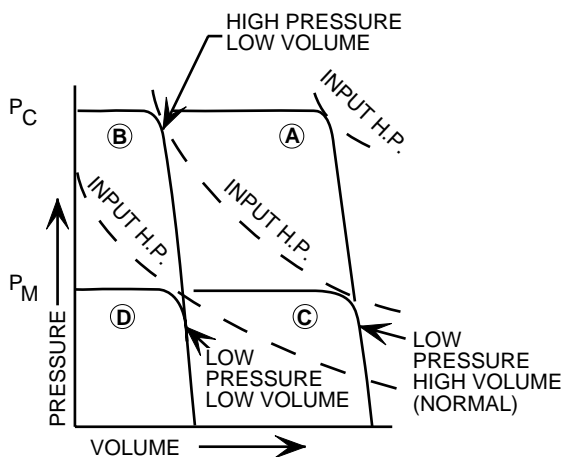
Common Control Valve

- Two field adjustable pressure levels and flow limits provide:
 - Low pressure, high flow (A)
 - High pressure, low flow (B)
- Pump mounted control valve or remote pilot signal.



Independent Control Valves or Signal

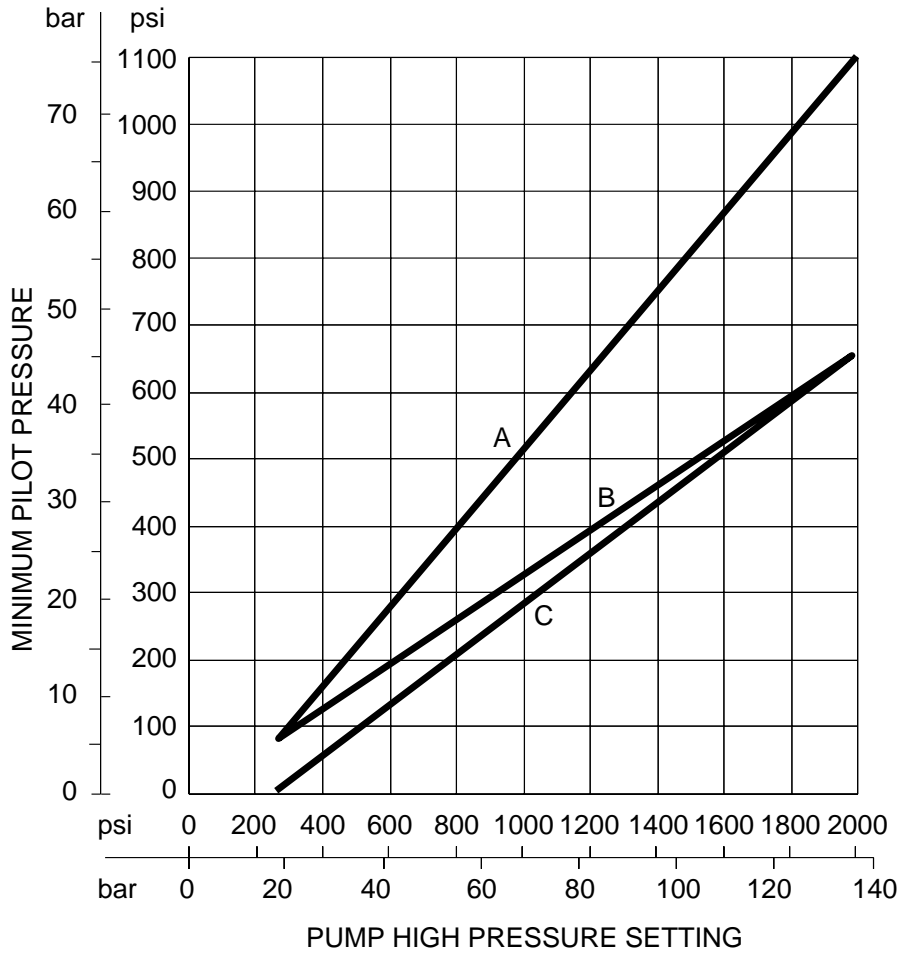
- Two field constant pressure levels and adjustable flow limits provide:
 - High pressure, high flow (A)
 - High pressure, low flow (B)
 - Low pressure, high flow (C)
 - Low pressure, low flow (D)
- Remote mounted control valves for pilot signals only.



NOTE: When using dual volume control, a minimum pump pressure (P_M) must be maintained to hold pump in low volume, output where $P_M = 55\%$ of P_C (maximum compensated pressure).



CONTROL PILOT PRESSURES



PUMP	CONTROL	PILOT	CURVE SOURCE
6	PRESSURE	REMOTE	C
15	PRESSURE	REMOTE	B
		INTEGRAL	-
	VOLUME	REMOTE	A
		INTEGRAL	A
50	PRESSURE	REMOTE	A
		INTEGRAL	-
	VOLUME	REMOTE	A
		INTEGRAL	A

**PVR15 SERIES
VANE PUMPS**
CONTROL OPTIONS

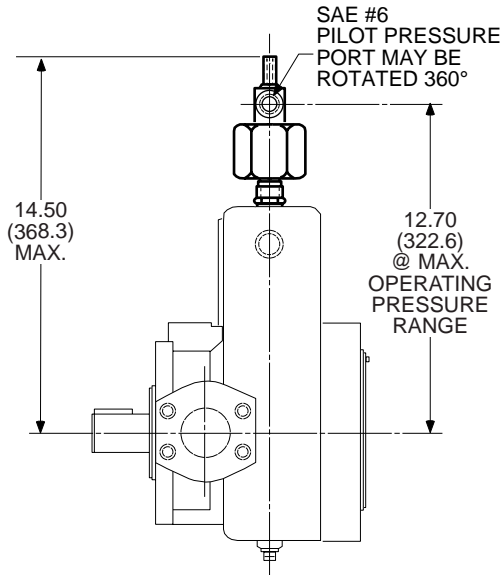


DUAL PRESSURE CONTROL DIMENSIONS

Dimensions shown in: Inches
(millimeters)

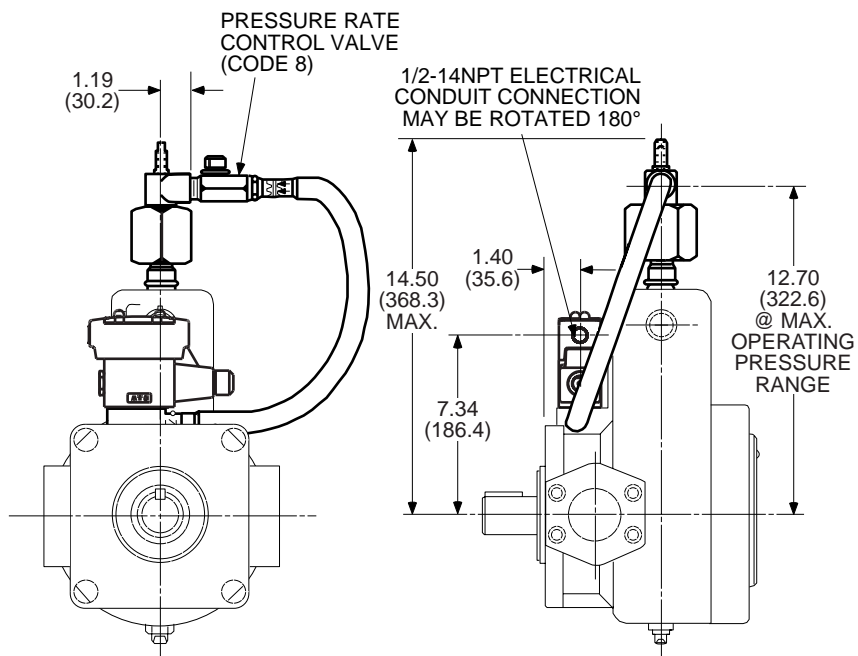
Code RF Pump
Remote Operator Control - Code 17

RF (CW) Rotation Shown ...
LF (CCW) Dimensions Are
The Same



Integral Operator Control* - Code 18

*NOTE: Requires choice of operator electrical option codes from Control Valve Options.





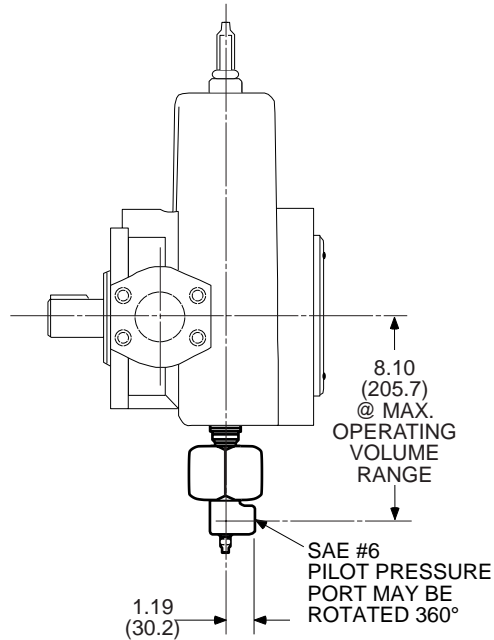
**PVR15 SERIES
VANE PUMPS**
CONTROL OPTIONS

DUAL VOLUME CONTROL DIMENSIONS

Code RF Pump
Remote Operator Control - Code 2400

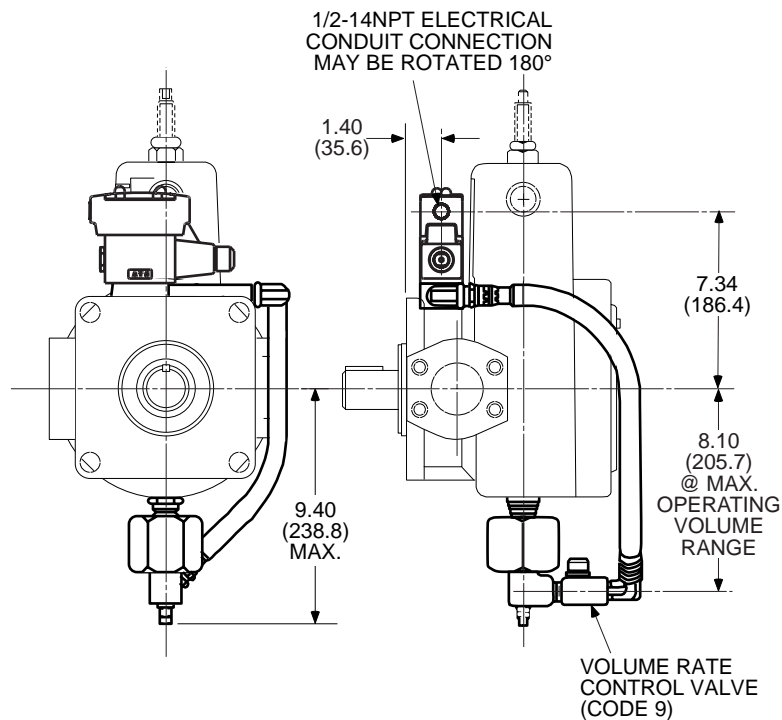
Dimensions shown in: Inches
(millimeters)

RF (CW) Rotation Shown ...
LF (CCW) Dimensions Are
The Same



Integral Operator Control* - Code 24

*NOTE: Requires choice of operator electrical option codes from Control Valve Options.



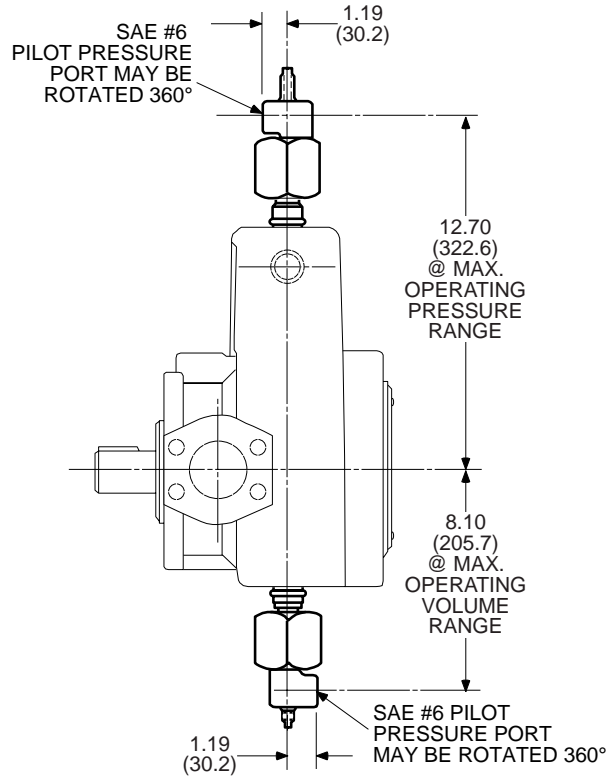
**PVR15 SERIES
VANE PUMPS**
CONTROL OPTIONS



DUAL PRESSURE/DUAL VOLUME CONTROL DIMENSIONS Dimensions shown in: Inches (millimeters)

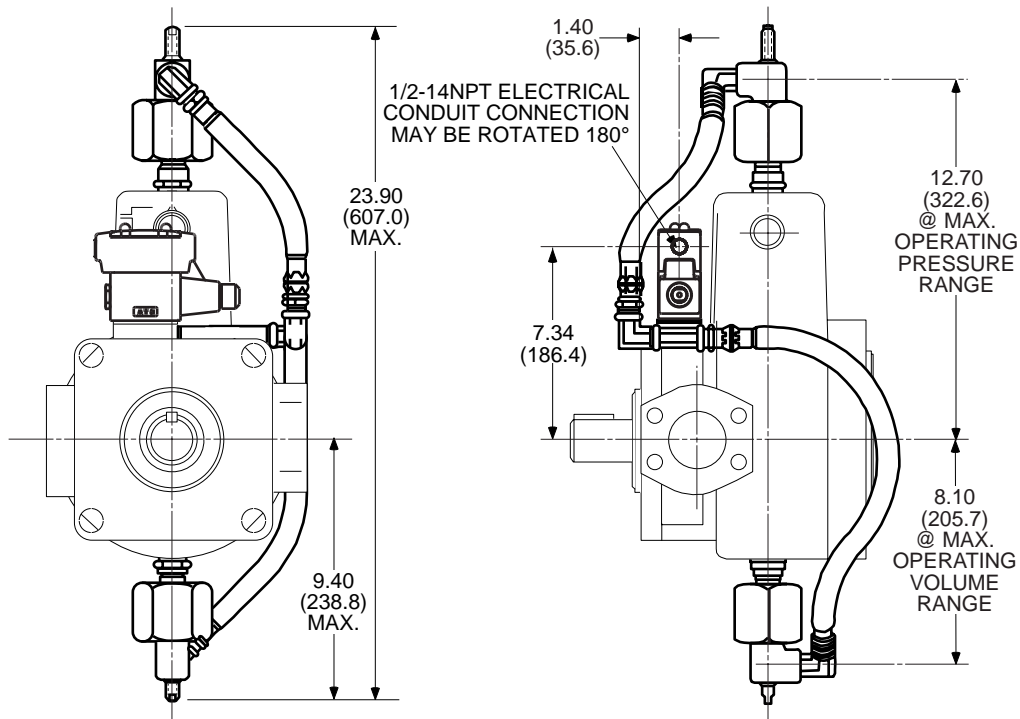
Code RF Pump
Remote Operator Control - Code 2500

RF (CW) Rotation Shown ...
LF (CCW) Dimensions Are
The Same



Integral Operator Control* - Code 25

*NOTE: Requires choice of operator electrical option codes from Control Valve Options.

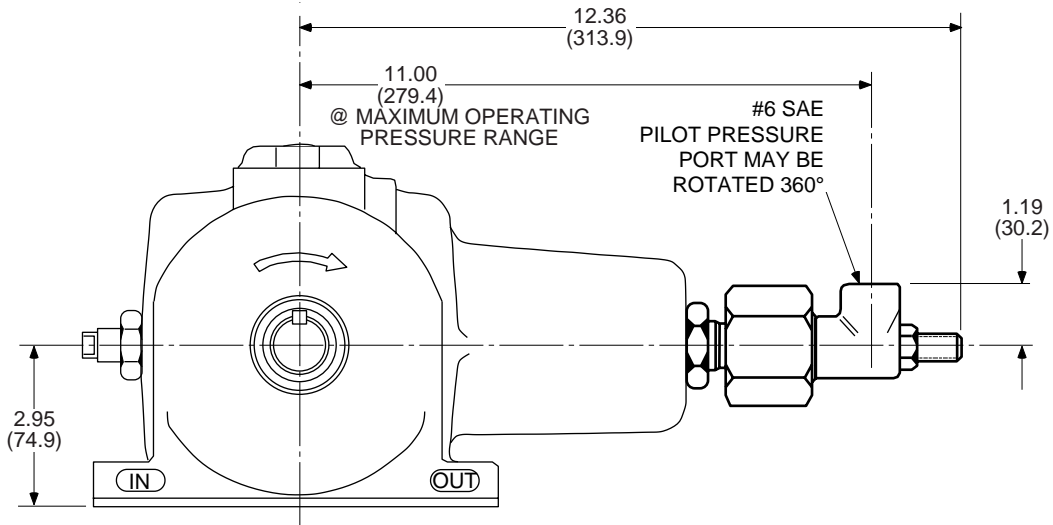




DUAL PRESSURE CONTROL DIMENSIONS

Code RM Pump

Remote Operator Control - Code 17



For more information please contact:



2 Swallow Drive, Alsager, Stoke on Trent, Staffs, ST7 2GJ

You can telephone or fax us in the UK on:

Tel: 08450 043440

Fax: 01270 876281



Web: <http://www.continentalhydraulics.co.uk>